



**AFFORDABLE**



**DURABLE**



**BUILT TO LAST**

**PERFORMANCE** OVER HYPE

# EQUIPMENT YOU CAN GROWTH WITH.

Designed for workshops that value **safe, reliable, and fairly priced solutions**, our wide range of lifts and capacities ensures you get exactly what you need.



Auto lifts are a major investment, which is why ours are built with growing workshops in mind –  **durable, long-lasting, and ready to get the job done.**

PART OF



**BRANDS DRIVING INNOVATION**



**YOU.**

# THE REASON WE'RE IN BUSINESS.

From the very beginning, there's only been one thing driving us at Forward Lift. That's you - the customer.

For almost 60 years we've been laser-focused on exceeding your expectations for quality, reliability, value, delivery, innovation and service. Since we began manufacturing products in 1968, the transformation of raw steel into precision operating equipment has required the best in engineering design, attention to quality control and superior manufacturing processes.

Forward has evolved from the early days as a "private-label" manufacturer to one of the most respected lift brands in today's industry. Now, Forward Lift is a leading manufacturer of vehicle lifting equipment that's uniquely designed for a wide range of customers. We provide safe and reliable lift systems for independent repair shops, car dealerships, heavy-duty truck facilities, body shops, and home enthusiasts. If you have a vehicle lifting need, there's a good chance Forward Lift has you covered.

We complement our superior products with the best distribution network in the industry. These experts ensure you receive the right product for the right application and will evaluate your facility and floor to make sure that minimum lift specifications are met.

**FORWARD LIFT**



**Independent repair shops**



**Body shops**



**Car dealership**



**Home enthusiasts**



**Heavy-duty truck facilities**

# 2026 PRODUCT LAUNCH



## PL35

**Capacity** 3500 kg



**Height** 3572 mm

**Max. lifting height** 1817 mm (1918 mm with extensions)

**Column distance (internal)** 2908 mm

**Drive-through width** 2650 mm

**Min. front arm length** 621 mm

**Max. front arm length** 1052 mm

**Min. rear arm length** 715 mm

**Max. rear arm length** 1100 mm



## PL40

**Capacity** 4000 kg



**Height** 4000 mm

**Max. lifting height** 1863 mm (1928 mm with extension)

**Column distance (internal)** 2764 mm

**Drive-through width** 2506 mm

**Min. front arm length** 715 mm

**Max. front arm length** 1051 mm

**Min. rear arm length** 775 mm

**Max. rear arm length** 1138 mm



## PL45

**Capacity** 4500 kg



**Height** 4000 mm

**Max. lifting height** 1863 mm (1928 mm with extension)

**Column distance (internal)** 2916 mm

**Drive-through width** 2659 mm

**Min. front arm length** 611 mm

**Max. front arm length** 1131 mm

**Min. rear arm length** 802 mm

**Max. rear arm length** 1235 mm

# 2-POST LIFTS TO MEET YOUR EVERY NEED.

**KEY:** ■ Supported ■ Recommended ■ Not recommended



## PL55

**Capacity** 5500 kg



**Height** 5052 mm

**Max. lifting height** 1893 mm (2147 mm with extension)

**Column distance (internal)** 3038 mm

**Drive-through width** 2752 mm

**Min. front arm length** 762 mm

**Max. front arm length** 1550 mm

**Min. rear arm length** 762 mm

**Max. rear arm length** 1550 mm



## PL65

**Capacity** 6500 kg



**Height** 5052 mm

**Max. lifting height** 1893 mm (2147 mm with extension)

**Column distance (internal)** 3038 mm

**Drive-through width** 2752 mm

**Min. front arm length** 762 mm

**Max. front arm length** 1550 mm

**Min. rear arm length** 762 mm

**Max. rear arm length** 1550 mm

**CAPACITY  
3.5 T**

**ASYMMETRIC LOAD  
ARM DESIGN WITH  
SYMMETRIC COLUMNS  
FOR IMPROVED VEHICLE  
ENTRY AND EXIT**



**SIMPLE TO SPOT.  
SIMPLE TO OPERATE.**

**LOAD ARM DESIGN  
AND PICK-UP RANGE**

with an asymmetric load arm design, the 3-stage front and 2-stage rear load arms allow for easy spotting and positioning. The load arm design and specifications ensure that a greater range of vehicles can be lifted with ease on recommended pickup points, including Battery Electric and European.



**DUAL HYDRAULIC CYLINDERS WITH  
WIRE CABLE EQUALIZATION.**

Dual hydraulic cylinders are the driving force behind lift performance and ensure strong, smooth operation. Coupled with overhead wire cable equalization, it allows the lift to operate safely for improved technician piece-of-mind.



### SINGLE POINT OPERATION.

Proven single point operation. Push button raising via control box, with manual lowering valve and safety lock release for lowering.

Simple, effective and ensures the technician is always in control from one vantage point.



### LOW PROFILE SPIN-UP PADS WITH RUBBER PADS.

Supplied standard with 2-stage, threaded pickup pads. With 90 mm minimum height, easily meet height, easily spot the lowest of vehicles.



With the threaded pick-up pads fully adjusted, together with the included 65 mm extension pads, technicians can instantly increase the pickup height to 191 mm.

### LIFT COMES STANDARD WITH:



#### FOUR 65 MM LOW-PROFILE, 2-STAGE, ROUND SPIN-UP PADS.

90 MM MINIMUM PAD HEIGHT

Round pads are designed for use with uni-body and battery electric vehicles. The round rubber pad ensures no metal on metal contact and allows for protection of a vehicle's under-body.



#### FOUR 65 MM DROP-IN SPACERS.

Extension pads help technicians reach pick-up points for high-ride vehicles like SUV's. They simply drop into the load arm.



## STRONG SINGLE-PIECE SYMMETRIC COLUMNS.

The equipment, tooling and production processes ensure reduced integrity impacts on the material used in our lifts, this increases lift longevity.

Single piece columns also allow for improved assembly and installation times.



## LIFT CARRIAGE STRENGTH AND DESIGN.

The lift carriage design coupled with the use of solid UHMW slider blocks, ensures improved stabilization and travel within the column. Easy access to equalization cable points ensures quick install and serviceability.



## DUAL SAFETY LOCK MECHANISMS.

Mounted to the rear of each column, the lift is equipped with dual safety lock mechanisms. The locking pawls automatically engage the lock ladder of the carriage as the lift is raised. Both locks are disengaged for lowering via the single lock release handle on the control column.



## SPRING OPERATED ARM RESTRAINTS.

Featuring a fine tooth design, the arm restraints are formed vs machined, offering a high-quality finish for increased longevity. The arm restraint provides the ultimate range in motion and ensures technician peace of mind.

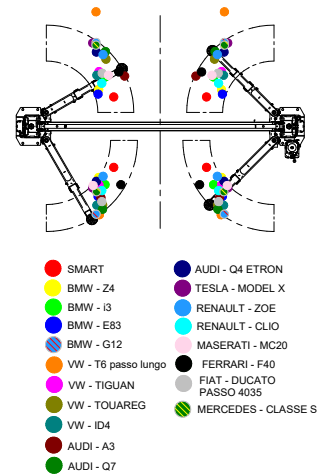
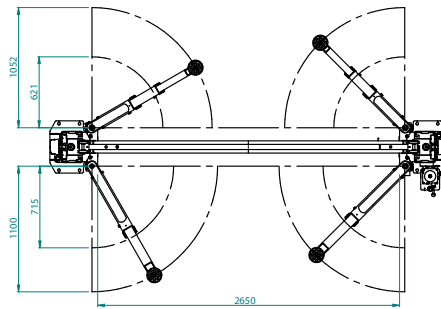
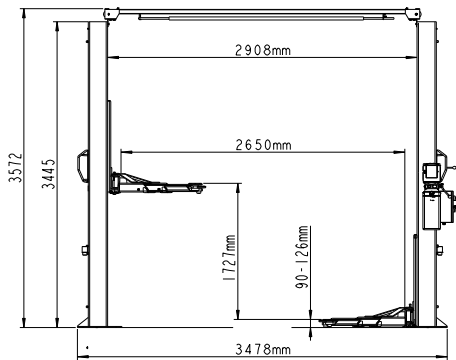


## TECHNICAL DATA

### PL35

FOR.P35XX.189950

<b>Capacity</b>	3500 kg	<b>Min. front arm length</b>	621 mm
<b>Max. lifting height</b>	1817 mm (1918 with extensions)	<b>Max. front arm length</b>	1052 mm
<b>Lifting time</b>	50 s	<b>Min. rear arm reach</b>	715 mm
<b>Min. pad height</b>	90 mm	<b>Max. rear arm reach</b>	1100 mm
<b>Max. pad height</b>	126 mm	<b>Width</b>	3478 mm
<b>Column distance (internal)</b>	2908 mm	<b>Height</b>	3572 mm
<b>Drive-through width</b>	2650 mm	<b>Min. concrete thickness</b>	150 mm
<b>Min. ceiling height</b>	3700 mm	<b>Power supply</b>	380 - 400 V   50-60 Hz 3 Ph
<b>Overhead switch</b>	3445 mm		



## AVAILABLE ACCESSORIES



### 89 AND 127 MM SPACERS

FJ0089 - 4\* 89 mm pads  
 FJ0127 - 4\* 127 mm pads  
 Kits of four stackable spacers, bracket and hardware



### TRUCK RUBBER PADS

T100285  
 Kit of four rubber pads, bracket and hardware



### RECTANGULAR EV PADS

FJ6244KIT  
 Kit of four rubber pads for lifting EV vehicles (Tesla, Honda and Other)

**CAPACITY  
4.0-4.5 T**

**2-POST LIFT  
WITHOUT BASE,  
WITH ASYMMETRIC  
ARMS AND  
SYMMETRIC POSTS**  
THAT ENABLE  
AN EASY ACCESS TO  
THE PICK-UP POINTS  
OF THE VEHICLE



### **TWO PISTONS FOR INTENSIVE USE**

designed to minimise down-time,  
by requiring little maintenance.



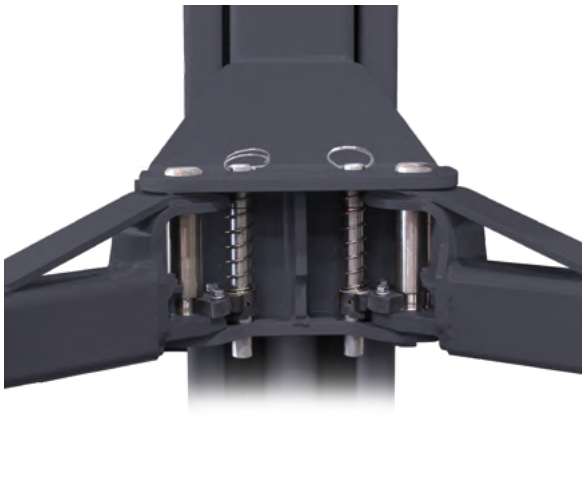
### **SHUT-OFF BAR**

to prevent damage caused by lifting high vehicles.



### **POWDER COATING**

for a longer lifetime.



### **ARM SAFETY LOCKING**

with automatic engagement and automatic release  
when the arm reaches the floor.



### **SINGLE POINT OPERATION.**

Proven single point operation. Push button raising via control box, with manual lowering valve and safety lock release for lowering. Simple, effective and ensures the technician is always in control from one vantage point.



### **MECHANICAL SAFETY LATCH**

with automatic engagement ensuring maximum safety when lift is in standing position.

### **MANUAL RELEASE BY LEVER.**

### **LIFT COMES STANDARD WITH:**



**65 AND 127 MM SPACERS.**



**SUPPORT BRACKETS FOR SPACERS.**

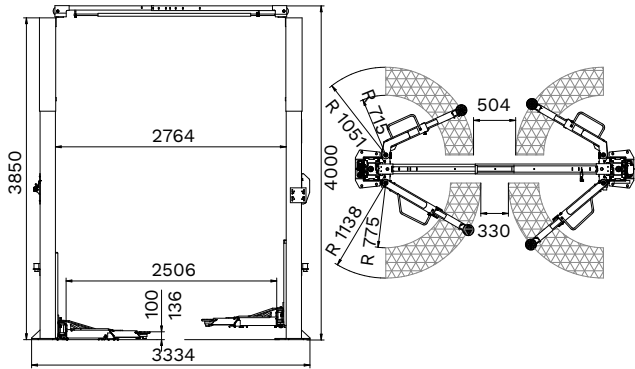
## TECHNICAL DATA

	PL40	PL45
<b>Capacity</b>	4000 kg	4500 kg
<b>Max. lifting height</b>	1863 mm (1928 mm with extension)	1863 mm (1928 mm with extension)
<b>Lifting time</b>	54 s	54 s
<b>Min. pad height</b>	100 mm	100 mm
<b>Max. pad height</b>	136 mm	136 mm
<b>Column distance (internal)</b>	2764 mm	2916 mm
<b>Drive-through width</b>	2506 mm	2659 mm
<b>Max. usable height</b>	3850 mm	3850 mm
<b>Surface coating</b>	powder coated	powder coated
<b>Arm layout</b>	asymmetrical	asymmetrical
<b>Telescopic front arms</b>	3 stages (S)	3 stages (S)
<b>Telescopic rear arms</b>	2 stages (L)	2 stages (L)
<b>Min. front arm length</b>	715 mm	611 mm
<b>Max. front arm length</b>	1015 mm	1131 mm
<b>Min. rear arm length</b>	775 mm	802 mm
<b>Max. rear arm length</b>	1138 mm	1235 mm
<b>Width</b>	3334 mm	3486 mm
<b>Height</b>	4000 mm	4000 mm
<b>Weight</b>	725 kg	750 kg
<b>Driving power</b>	2.2 kW	2.2 kW

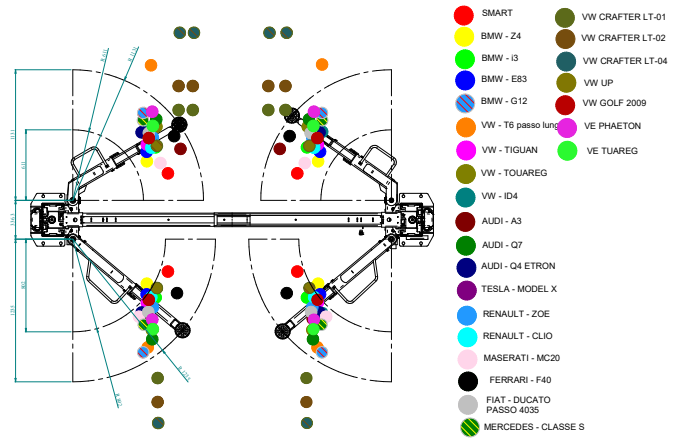
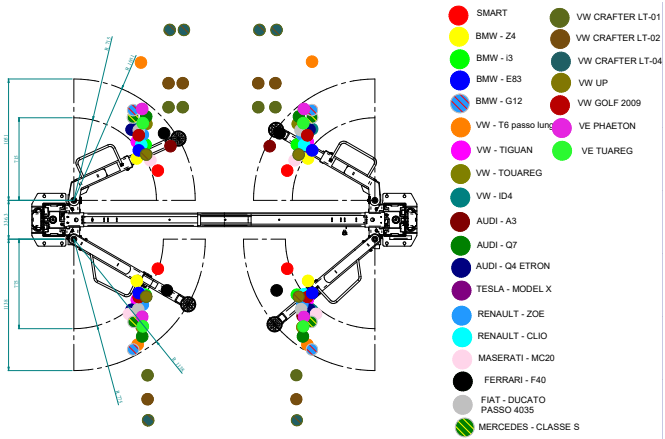
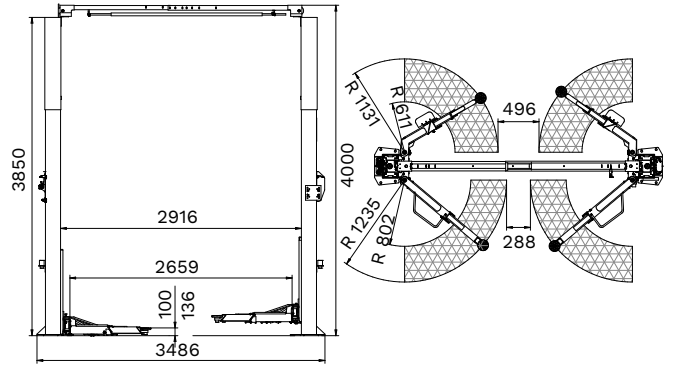
PL40	
Item no.	Power supply
<b>FOR.P40XX.189967</b>	400 V   50 Hz   3 Ph

PL45	
Item no.	Power supply
<b>FOR.P45XX.189974</b>	400 V   50 Hz   3 Ph
<b>FOR.P45XX.190000</b>	230 V   50 Hz   1 Ph

Model PL40



Model PL45



## AVAILABLE ACCESSORIES



### TRUCK RUBBER PADS

T100273Y

Kit of four rubber pads, bracket and hardware



### RECTANGULAR EV PADS

FJ6244KIT

Kit of four rubber pads for lifting EV vehicles (Tesla, Honda and Other)

**CAPACITY  
5.5 - 6.5 T**

**HIGH CAPACITY  
2-POST LIFT RAISES  
AND SERVICES WORK  
TRUCKS, VANS, AND  
SMALL BUSES**



762 mm minimum arm reach creates the needed clearance to swing arms between tires of shorter wheelbase vehicles.

### **3-STAGE FRONT AND REAR ARMS.**

- Heavy-duty gusseting.
- Extend and retract from 1550 to 762 mm.
- 140 mm minimum pad height from floor.

### **SPRING OPERATED ARM RESTRAINTS.**

- Keeps lift arms performing at their peak performance.
- Arm restraints disengage at floor level.

### **LIFT COMES STANDARD WITH:**



#### **LARGE THREADED TRUCK PADS AND FOUR EACH PADS SPACERS.**

- 127 mm
- 254 mm

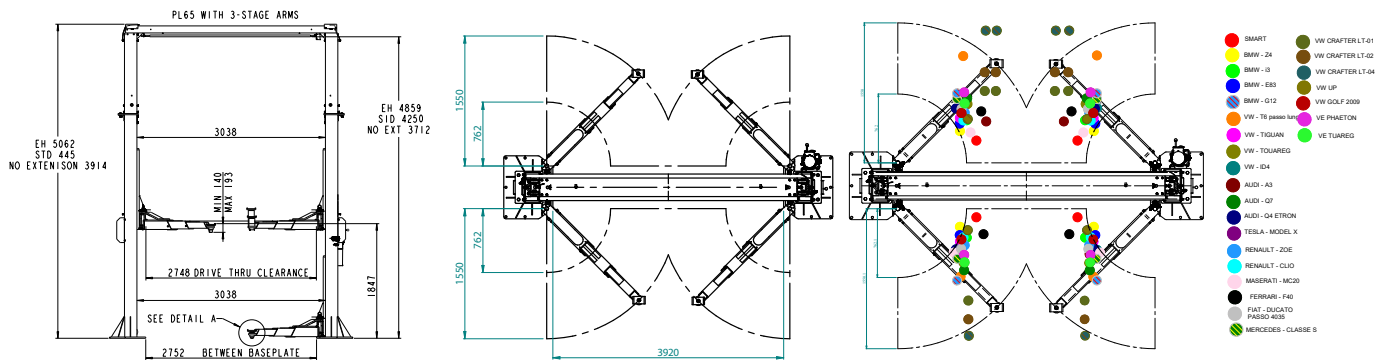


#### **SUPPORT BRACKETS FOR SPACERS.**

- 127 mm
- 254 mm

## TECHNICAL DATA

	PL55	PL65
	FOR.P55XX.189981	FOR.P65XX.189998
<b>Capacity</b>	5500 kg	6500 kg
<b>Max. lifting height</b>	1847 mm (2154 mm with extensions)	1847 mm (2154 mm with extensions)
<b>Lifting time</b>	54 s	54 s
<b>Min. pad height</b>	140 mm	140 mm
<b>Max. pad height</b>	193 mm	193 mm
<b>Column distance (internal)</b>	3038 mm	3038 mm
<b>Drive-through width</b>	2752 mm	2752 mm
<b>Arm layout</b>	symmetrical	symmetrical
<b>Telescopic front arms</b>	3 stages	3 stages
<b>Telescopic rear arms</b>	3 stages	3 stages
<b>Min. front arm length</b>	762 mm	762 mm
<b>Max. front arm length</b>	1550 mm	1550 mm
<b>Min. rear arm length</b>	762 mm	762 mm
<b>Max. rear arm length</b>	1550 mm	1550 mm
<b>Width</b>	3920 mm	3920 mm
<b>Height</b>	5061 mm	5061 mm
<b>Power supply</b>	400 V   50-60 Hz   3 Ph	400 V   50-60 Hz   3 Ph






**PERFORMANCE** OVER HYPE



A **DOVER** COMPANY

Vehicle Service Group, LLC, 2700 Lanier Dr, Madison, IN 47250

 [info.emea@forwardlift.com](mailto:info.emea@forwardlift.com)